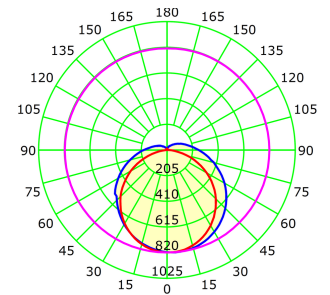
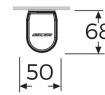
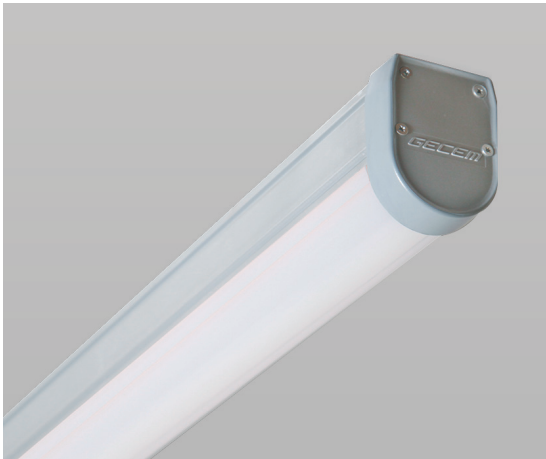


ALUMA

GCP 1236WA SG40



Unit: cd
 — C0-C180 — C90-C270 — G2.5



Product Features and Key Data

Applications :	Warehouse - storage area - parking area - loading area - industrial area
Luminaire Type :	LED waterproof luminaire
Mounting Method :	Surface or suspension
Luminaire Optic :	PC diffuser
Connected Load :	36W
Colour Temperature :	4000K
Rated Luminous Flux :	3600 lm
Luminous Efficiency :	100 lm/W
Power Factor :	> 0,955
CRI Value :	> 80
UGR :	< 21 (ENI24664-1)
Photo Biological Class :	Group 0 - No risk
Luminaire Colour :	Grey Color
Luminaire Body :	Aluminium body polycarbon glass.
Electrical version :	With electronic transformer, switchable.
Connection method :	Terminal
Mains frequency :	50/60 Hz
Mains voltage :	220 - 240 V
Led Service (25°) :	L80 = 50.000 h
Driver (220 - 240V) :	Tridonic, Osram, Gecem
Ceiling Type :	AB - Gypsum Ceiling TB - Modular Ceiling KB - Clip-in Ceiling
Ingress Protection (IP) rating :	IP65
Protection class :	I
Impact resistance (IK) :	IK08
Hot wire resistance :	650 °C
Ambient temperature :	-35 - 55 °C
Options :	1 - 3 Hours Emergency Kit, Dali Dimmible
Accessories :	Suspension Kit, Sensor